

型号	Model	LS-6022
电压	Voltage	220V 50~60Hz Single 单相
功率	Power	1.2 KW
外形尺寸	Dimensions	1180*650*1450 MM
装箱尺寸	Packing size	890*750*1255 MM
净重	Net weight	88 KG
毛重	Gross weight	130 KG

*以上型号仅供参考，详细情况请咨询。
The above models are for reference only, please inquire for details.

*为了改良，产品规格若有变更，恕不另行通知。为安全起见，使用之前，请仔细阅读使用手册。
For improvement, product specifications are subject to change without notice. For safety reasons, read the manual carefully before use.

LS-6022

穿绳机

Rope threading machine



浙江凌志智能科技有限公司
ZHEJIANG LENSH INTELLIGENT TECHNOLOGY CO.,LTD.

地址：宁波市海曙区光文路500号 电话(TEL)：0574-8742 3969 0574-8388 5719
Address: No 500 RD Guangwen District Haishu Ningbo Zhejiang, China E-mail: wuhanqiao66@163.com web: www.lensh.net



应用范围 | Application

适用运动裤类的穿绳工艺

Suitable for stringing process of sports pants



应用工艺 | Application process

应对不同工艺，提供标配及选配组件

Respond to different processes and provide standard and optional components

手控组件 (标配)

Hand control components (standard)



新款手控，分段控制，无极变速

New manual control, segmented control, stepless speed change

远程数据采集系统 (选配)

Remote data collection system (optional)



故障率数据 Failure rate data

产能数据 Capacity data

使用率数据 Usage data

规格范围 | Specification range

裤腰扩张范围

The waistband expands the range

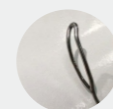
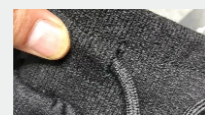


腰围周长 Waist circumference

~ 60~170 cm

平头锁眼

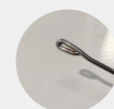
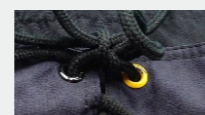
Flat head keyhole



钢丝 steel wire GS01

金属气眼

Metal gas eye



钢丝 steel wire GS02

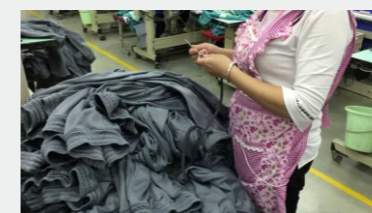
孔径 aperture >5mm

效率分析 | Efficiency analysis

~120%



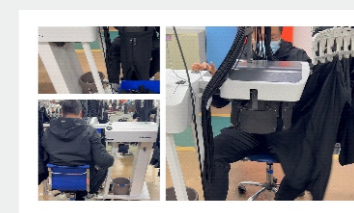
Before 约 20~32 s / pcs



强度大，效率低

High strength and low efficiency

After 约 9~11 s / PCS



效率高 劳动强度低

High efficiency and low labor intensity