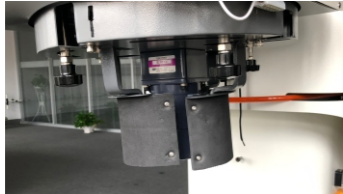



提供童装版组件（选配）TK01
Provide children's wear edition components (optional) TK01




最小裤腰尺寸 50CM
minimum waist size 50cm

钢丝规格（耗材）
Steel wire specification (consumables)



G501
标准版 折弯钢丝（大头）
应对7~8MM孔眼
Standard edition bending steel wire(large head)
Coping with 7-8mm hole



G502
专用版 折弯钢丝（小头）
应对5~6MM孔眼
Special edition bending steel wire(small head)
Coping with 5-6mm hole

技术参数 | Technical parameters

型号	Model	LS-6021S
电压	Voltage	220V 50~60Hz
功率	Power	0.7 KW
外形尺寸	Dimensions	1200*600*1750 MM
装箱尺寸	Packing size	1210*720*1450 MM
净重	Net weight	165 KG
毛重	Gross weight	225 KG

*以上型号仅供参考，详细情况请咨询。
The above models are for reference only, please inquire for details.

*为了改良，产品规格若有变更，恕不另行通知。为安全起见，使用之前，请仔细阅读使用手册。
For improvement, product specifications are subject to change without notice. For safety reasons, read the manual carefully before use.



浙江凌志智能科技有限公司
ZHEJIANG LENSH INTELLIGENT TECHNOLOGY CO.,LTD.

地址：宁波市海曙区光文路500号 电话(TEL)：0574-8742 3969 0574-8388 5719
Address: No 500 RD Guangwen District Haishu Ningbo Zhejiang, China E-mail: wuhanqiao66@163.com web: www.lensh.net

LS-6021S

自动穿绳机

Automatic string thrusting machine



应用范围 | Application

适用于平头锁眼、鸟眼绣孔、金属气眼孔的穿绳工艺

Suitable for flat buttomhole, bird eye embroidery hole, metal air hole string technology



应用工艺 | Application process

应对需求, 提升性能, 新增6021S款

Responding to demand, improving performance, add 6021S

LS6021 经典款

Classic style



人性化的设计 操作简便 安全舒适 高效
Humanized design, easy to operate, safety, comfortable, efficient.

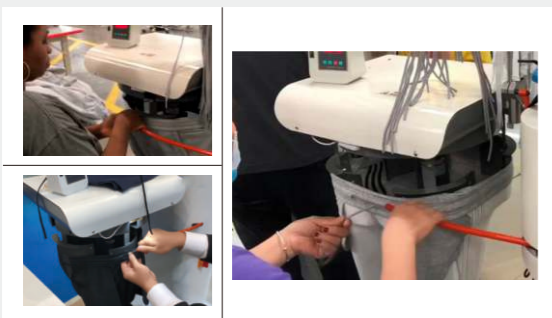
LS6021S 升级数显版

Upgrade digital version



升级重点 1、电控模块化 2、齿条管一体化 3、控制数字化 (产能 速度 警示)
Upgrade Focus Electric Modular Strip Tube Integration Control Digitization (Capacity Speed Warning)

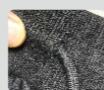
规格范围 | Specification range



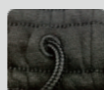
适用孔眼
Applicable hole

适用带绳
Suitable for rope

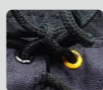
切口 ≥ 5mm



直径 ≥ 5mm



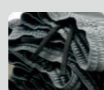
直径 ≥ 5mm



平头眼
flat buttom hole

鸟眼绣
Bird's Eye Embroidery

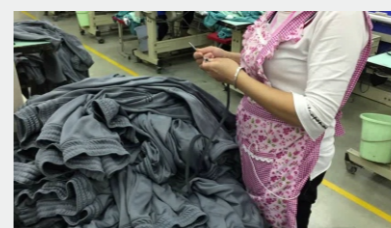
金属气眼
Metal air hole



效率分析 | Efficiency analysis

80~180% ↑

Before 20~32s



人工作业劳动强度大 效率低
Manual work quickly tired and low efficiency

After 9~12s



自动化设备作业, 低疲劳度、效率高
Automated equipment operation, low fatigue, high efficiency